



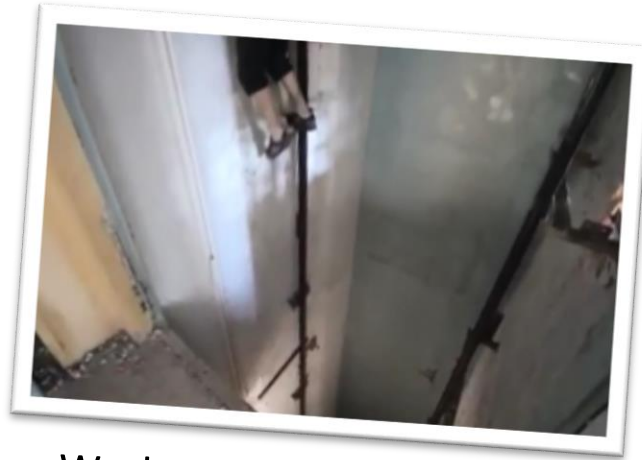
Lifts & Escalators: Improving safety for workers and users

Carine Le Callonnec (Education & Training)

TOTALLY SAFE INDUSTRY...?



Youngster riding an elevator



Worker dismantling a lift



Worker with amputated finger



Kayaking on an escalator



BUILD A SAFER WORLD



**Influence
European & National laws**



**SNEL
LD 2014/33
EN 81-20...**

**SNEE
EN 115...**



Success Story



**Influence
Users & Workers behaviours**



AWARENESS
KNOWLEDGE **ROUTINE**
INFORMATION
UNDERSTANDING

TRAINING

AWARD
EDUCATION
SANCTION

INFLUENCE BEHAVIOURS - WORKERS

HOW SAFE ARE WE AT WORK?




The mechanic is cleaning and lubricating the ropes using a brush whilst the unit is moving in normal operation.


A) What do you think of the situation?

- a) There is no issue. Ropes have always been cleaned this way.
- b) This is a bit tricky, but this is acceptable if the mechanic is careful.
- c) It is more effective to use a rag.
- d) It is very dangerous as hand can be caught by the sheave.

INFLUENCE BEHAVIOURS - WORKERS




BASIC SAFETY PRACTICES FOR LIFTS



FATAL & SERIOUS ACCIDENTS PREVENTION


ACCESS TO THE MACHINE ROOM OR THE PULLEY ROOM – TRAP ACCESS FALL PROTECTION

DESCRIPTION OF THE RISK:



Risk of falling from unsuitable access equipment if:

- unsafe ladder (damaged, too short or can't be secured to a fixing point)



Risk of falling from unsuitable access equipment if:

- unsafe trap (not robust enough, too heavy, no system to prevent accidental closing etc.)

PROTECTION MEANS:

VITAL RULE:
ALWAYS check condition of ladder and trap before use.
NEVER use improvised access equipment.

EXAMPLE OF SPECIFIC PROTECTION MEANS:

Safe Access Equipment:

- Ladder in good condition (not broken, damaged or fragile).
- Ladder with non-slip feet.
- Fixed ladder or hooking system to secure the ladder.
- Secured and robust trap.
- Handle to facilitate the access and good balance.

Personal Protective Equipment:

- Boots with clean, non-slip soles.
- Protective cap.

Safe procedure:

- Check that the above conditions are met.
- NEVER** stay positioned on the trap: it may not be robust.
- ALWAYS** close the trap (public and employee protection) if the access is not safe, inform the company.

The issue should be raised with your company who should inform the customer and/or inspection body (if relevant) to help and find an appropriate solution.


10




Soon:



INFLUENCE BEHAVIOURS - WORKERS

 **10 basic vital rules for lift professionals**

Basic Vital Rule 1




ALWAYS Wear the appropriate Personal Protective Equipment (PPE)

ALWAYS plan the tasks, evaluate the risks and put in place the appropriate actions

This is only an extract of the "Basic Safety Practices for Lift" booklet published by ELA. To know more and be 100% safe on job site, please refer to the full version of it available at : ELA website

Basic Vital Rule 2



ALWAYS ensure that effective fall protection is in place when working in the machine room, on the landing or on the top of the car or platform

This is only an extract of the "Basic Safety Practices for Lift" booklet published by ELA. To know more and be 100% safe on job site, please refer to the full version of it available at : ELA website

 **DO YOU KNOW... ?
FACTS ABOUT WORKERS ON LIFTS**

 **Lift industry actively cares for its workers**
To find out how, see ELA safety practices for lift booklet

 **Zero accident at work: sheer luck or real professionalism?**
To become a lift professional and avoid accidents, see ELA safety practices for lift

 **Best performing companies have the highest commitment on safety for their employees and contractors.**
To find out how to be a safer company, see ELA safety practices for lift

 **3000 employees injured in the last 3 years in the lift industry in Europe**
If you don't want to increase the statistics, see ELA safety practices for lift booklet

INFLUENCE BEHAVIOURS – USERS

Awareness packages



Audience



CONCLUSION

Robust analysis and data → Safe practices

Safe practices → Appropriate regulations

Appropriate regulations → Safe behaviours



HAPPY AND SAFE RIDE !



**WORK
SMART**

**WORK
SAFE**